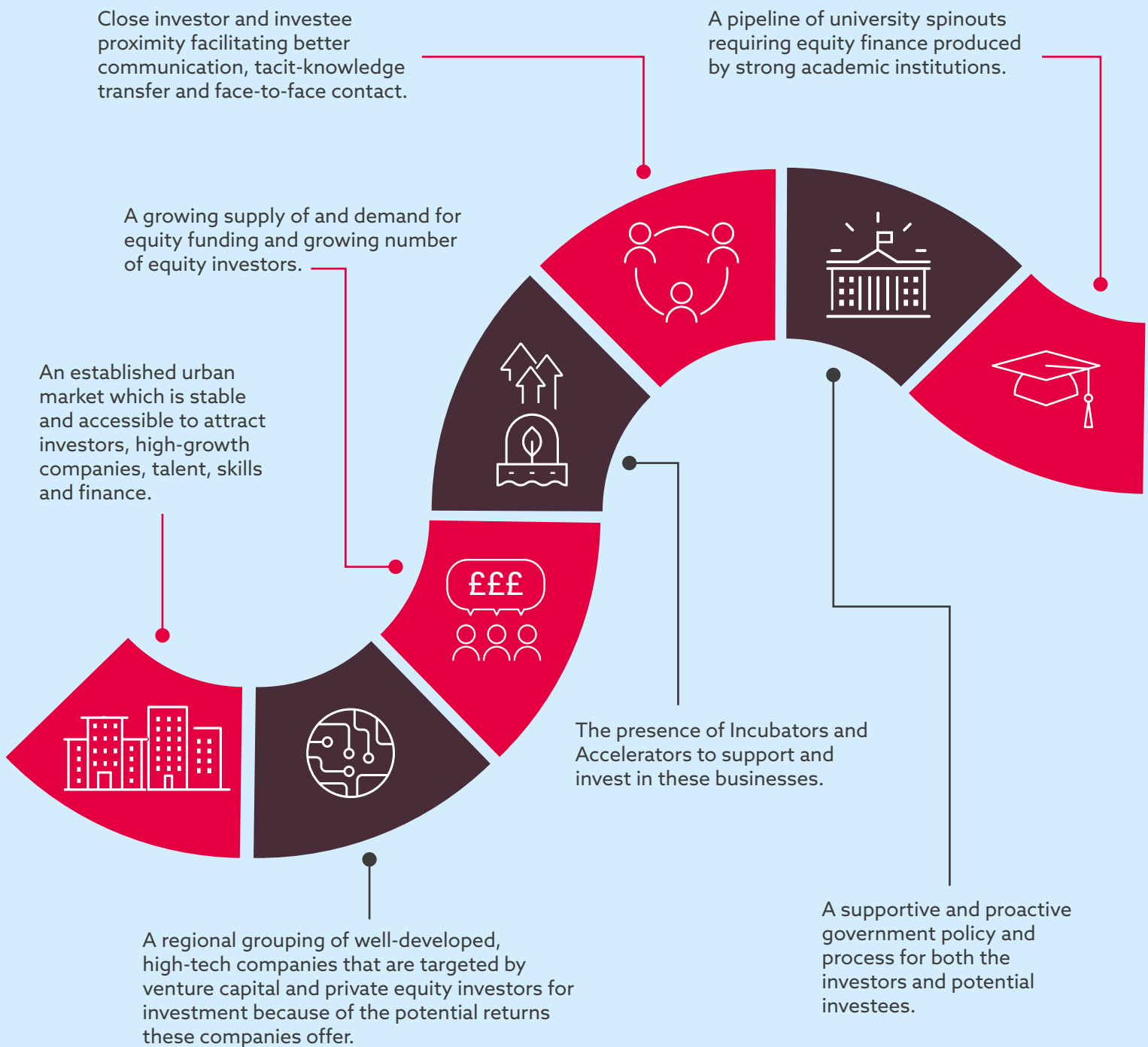


What is an equity cluster?

An equity cluster forms when innovative and high-growth companies located closely together are underpinned by factors which draw equity investors and investees together resulting in a high concentration of equity investments. This in turn encourages further entrepreneurial activity resulting in economic growth.

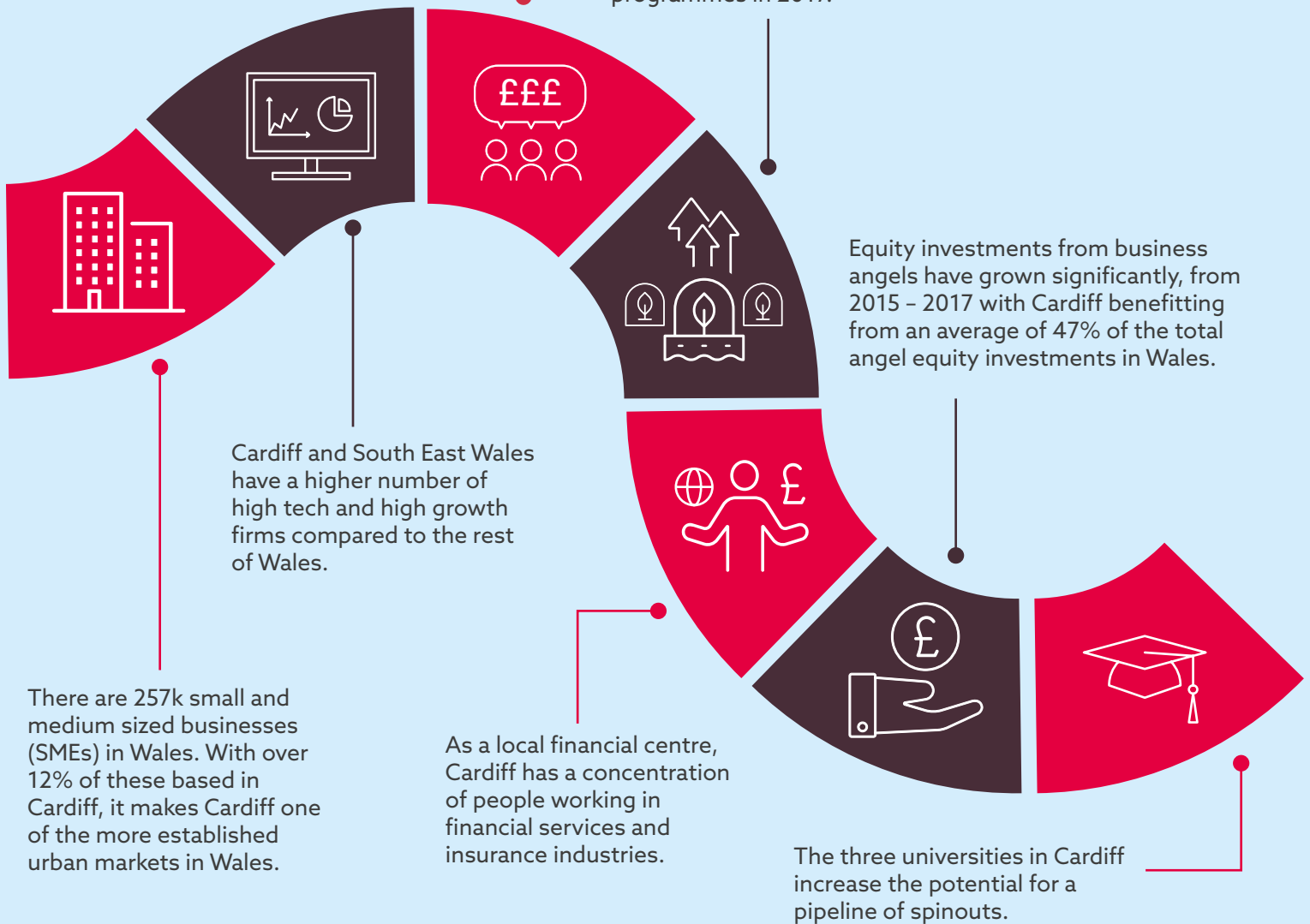
What needs to exist for an equity cluster to develop?



Cardiff as a developing equity cluster

In 2017 Cardiff was identified as one of the top 25 local authorities for the number of equity deals.

Cardiff has a higher density of business incubators and accelerator programmes compared to the rest of Wales with 152 businesses supported by accelerator programmes in 2017.



To find out more about Equity Clusters in Wales read the full report from Economic Intelligence Wales (EIW) [here](#).

For more information please contact: EconomicIntelligence@developmentbank.wales