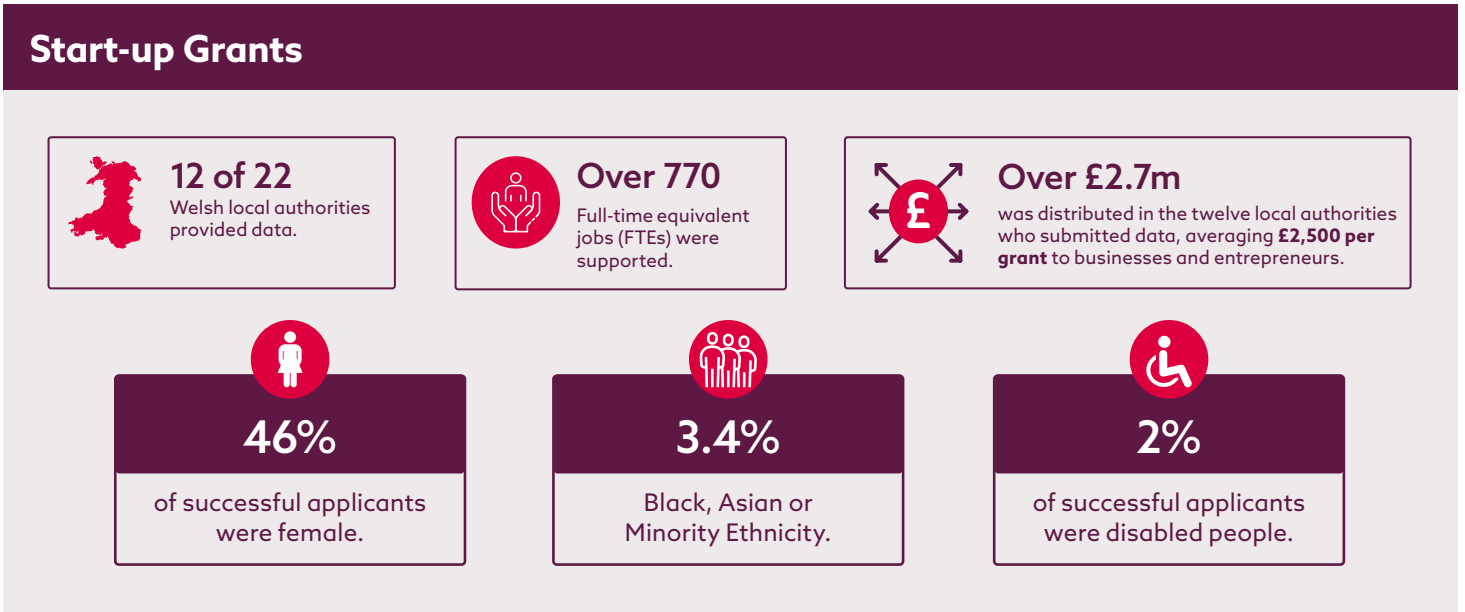
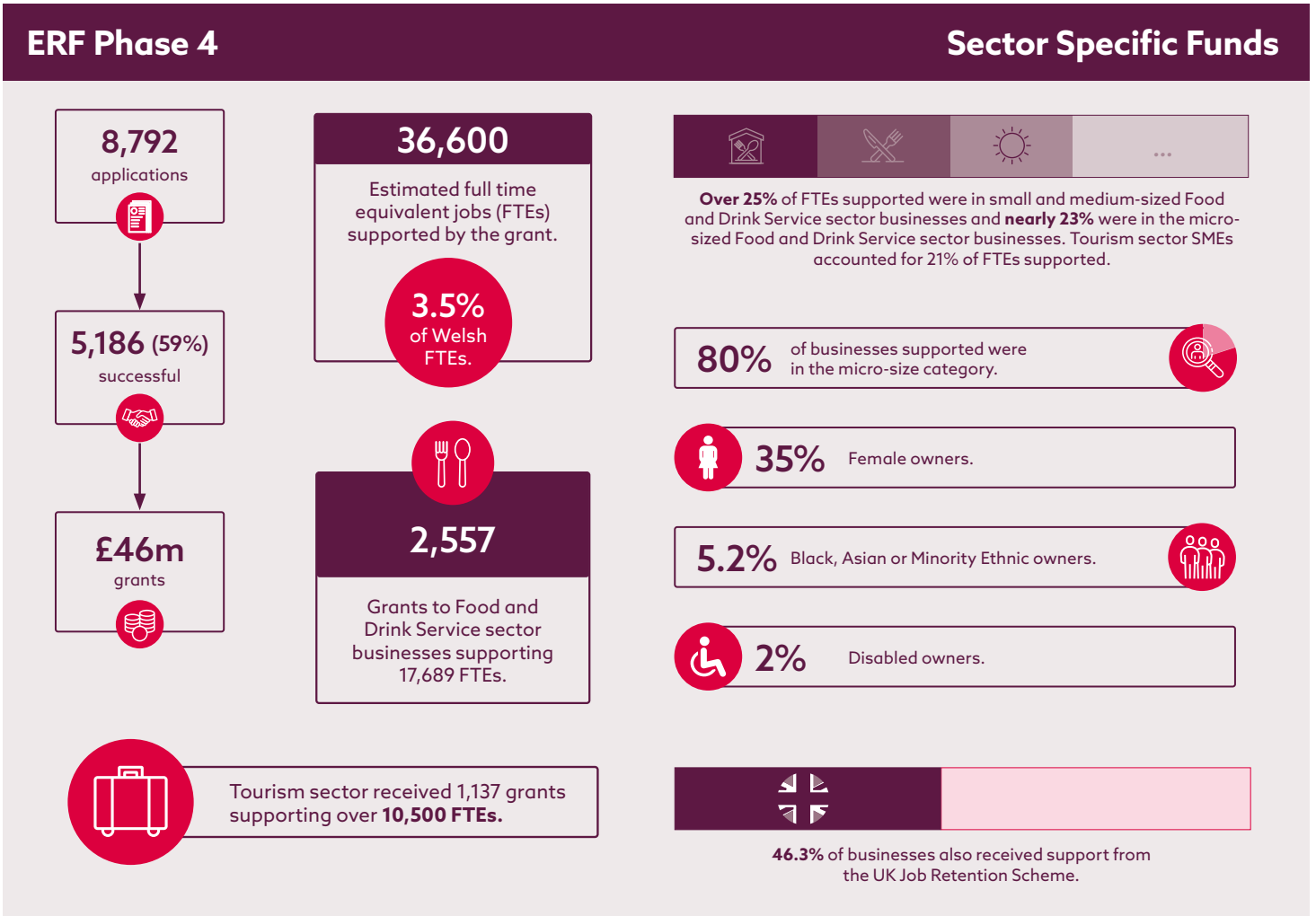
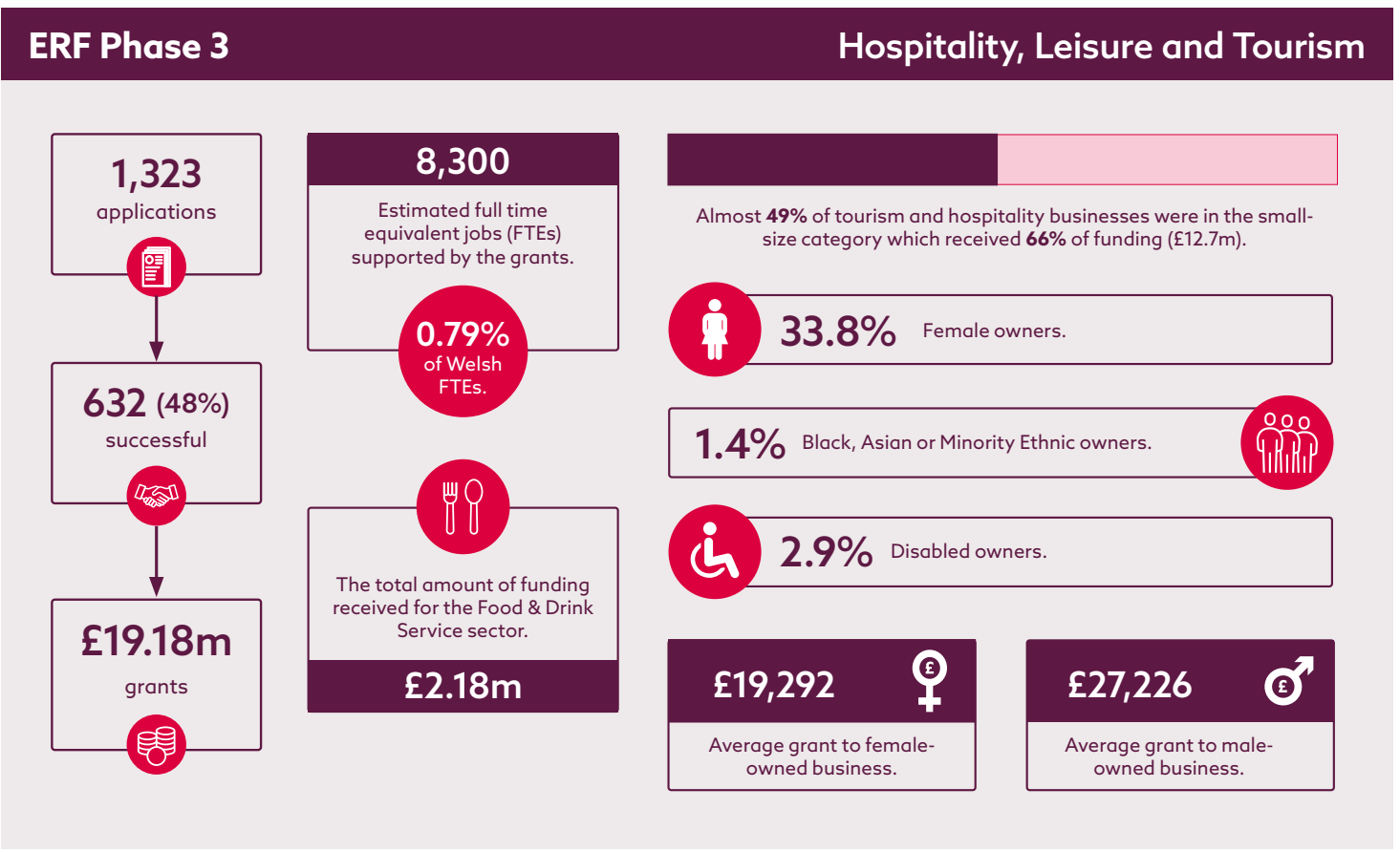
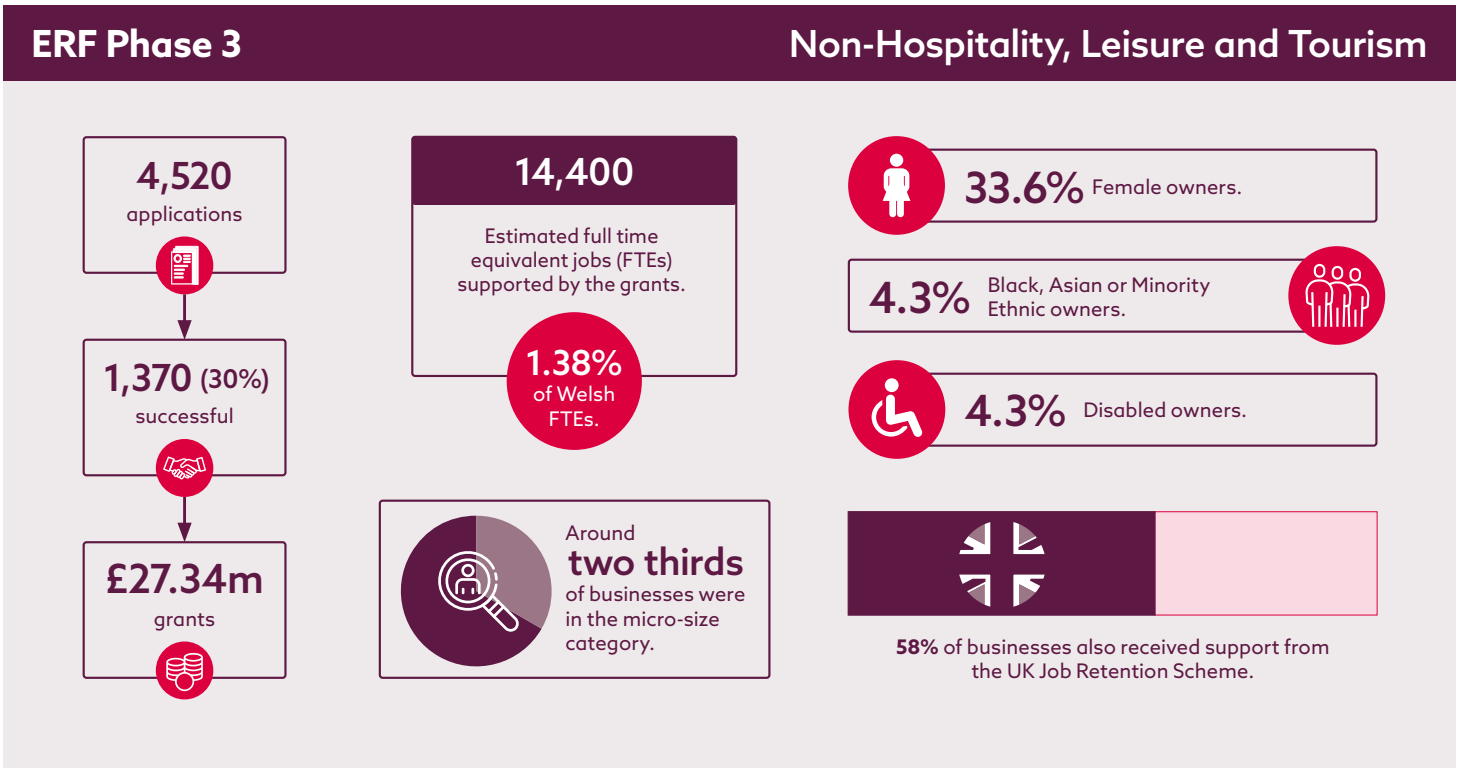


Covid-19 Welsh Government financial interventions: An analysis of administrative and beneficiary survey data

This is the second report in a programme of research to assess the effectiveness of Covid-19 financial interventions by Welsh Government. It analyses administrative data from Economic Resilience Fund (ERF) phases 3 and 4 together with Local Authority managed Start-Up Grant data.



The report also examines a survey of ERF Phase 1 and 2, the Covid-19 Wales Business Loan Scheme (CWBLS), and Start-Up Grants (SUG) beneficiaries. Findings confirm that Welsh Government assistance was an important complement to UK Government schemes, employment declines did not match the declines in output and support was used proactively for growth.

